



TORONTO TRANSIT COMMISSION

Woodbine Station Upgrades

Community Update

Danforth Mennonite Church

June 23, 2015



Easier Access – Program Wide

- Committed to making all stations accessible by 2025
- Almost half way there with 34 stations completed
- Working with the Advisory Committee on Accessible Transit on effective design
- Look for elevators, sliding doors, fare-gates and other features that will improve mobility for all transit riders

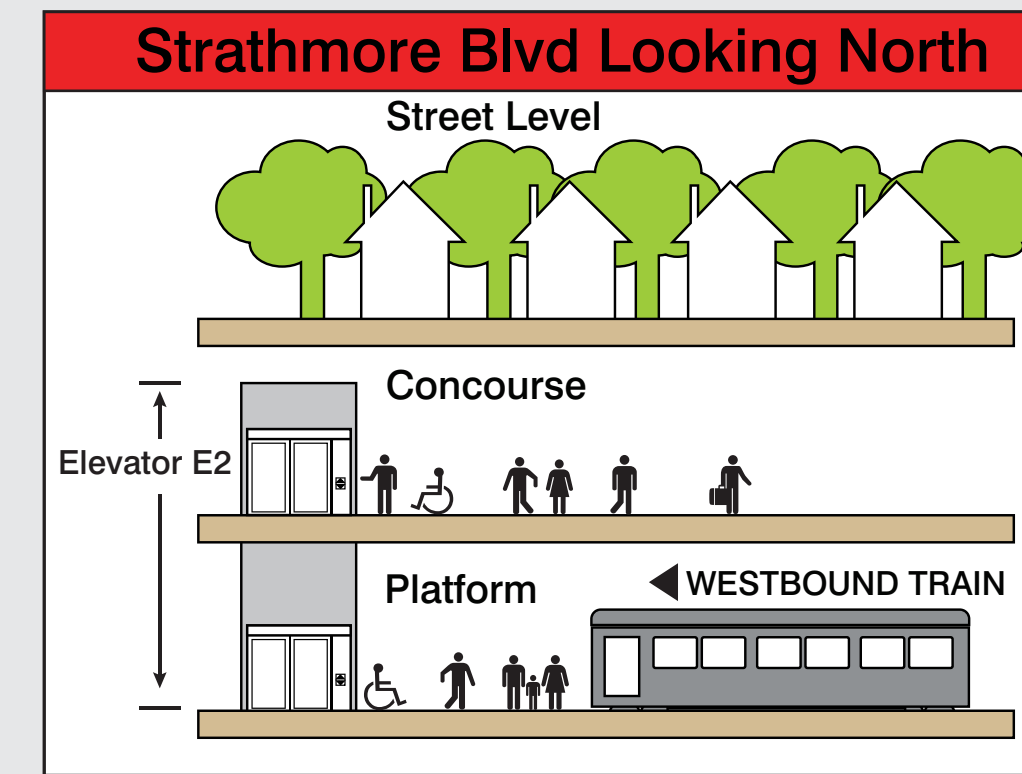
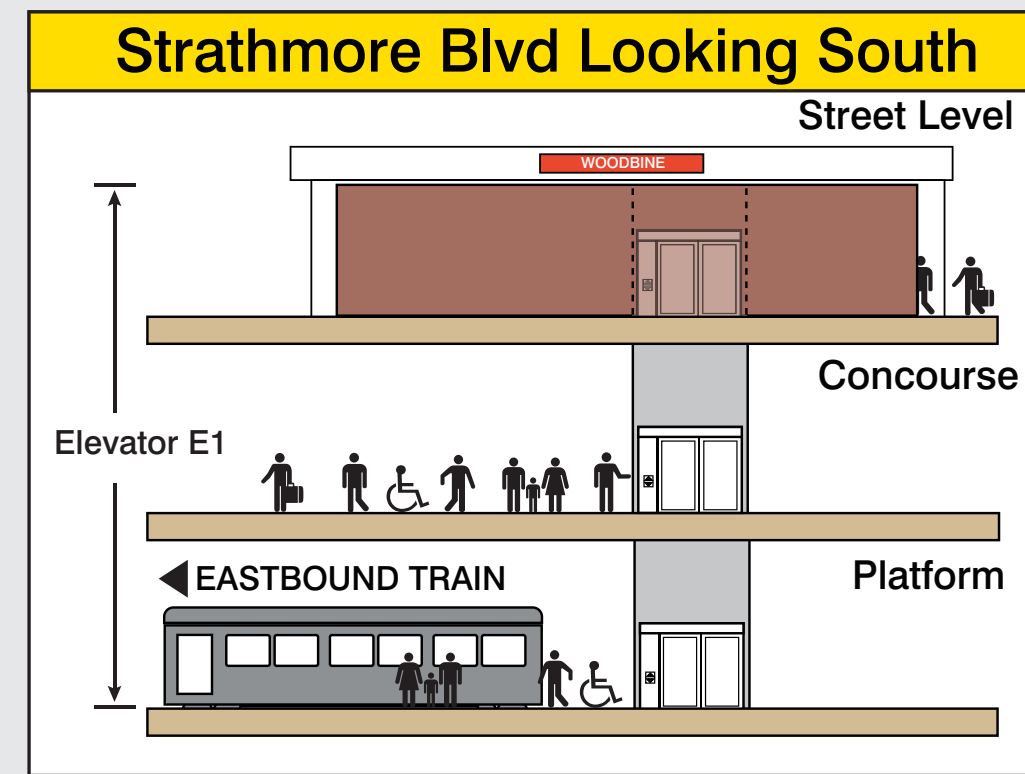




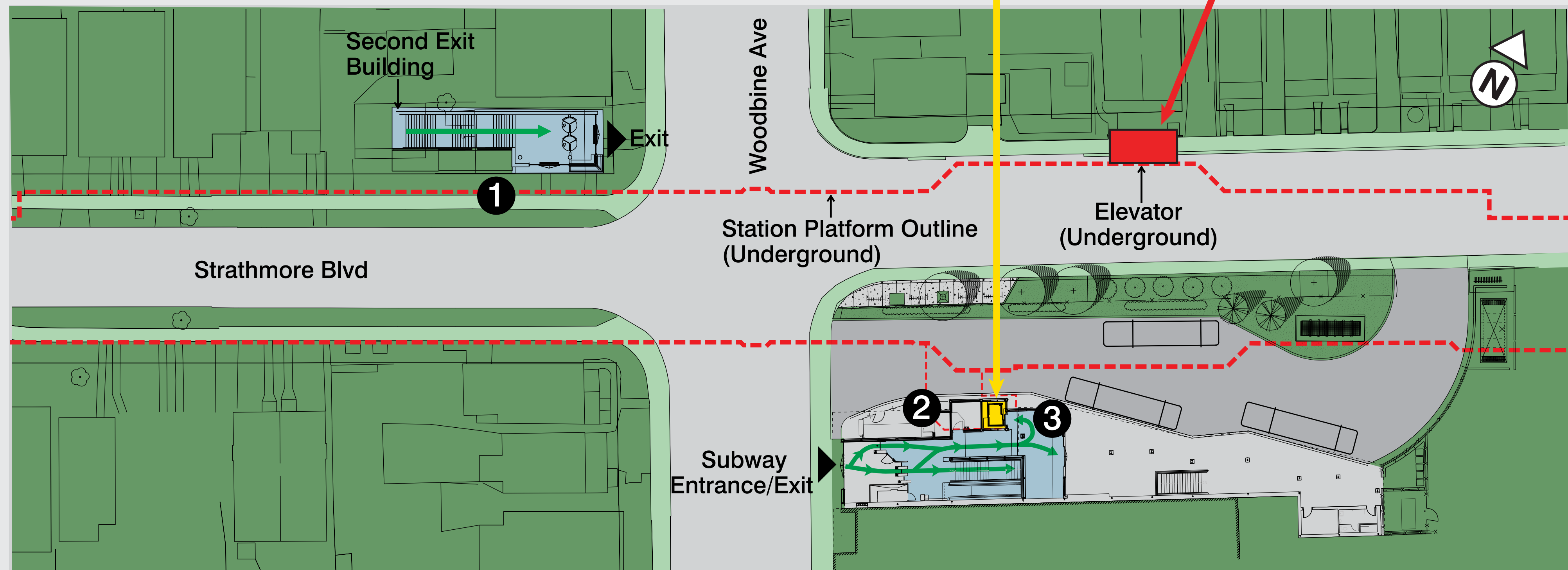
Woodbine Scope and Design



1 Second Exit at North West Corner of Strathmore & Woodbine



Walk underground to #1 or #2 to exit the station



Legend

- Pedestrian Circulation
- Existing
- Proposed



2 Main Entrance



3 Elevator E1 Exterior at Bus Platform



Woodbine Station Upgrades

Easy Access:

- Provide access for all customers
- New elevators from street level to concourse and platforms
- Sliding doors at station entrance and bus platforms
- Way finding / signage improvements.

Second Exit:

- Enhance customer convenience and safety
- Second exit facility at the north west corner of Woodbine Avenue and Strathmore Blvd combines exits from both subway platforms
- Second Exit will be converted to an entrance and be “Presto-ready” in 2017

Station Improvements:

- Repairs to exterior and interior finishes, lighting and signage upgrades
- Repairs to stairs at main station entrance
- Enhanced landscaping in community garden and bus bay
- Landscaping at Second exit
- Repaving of the bus loop



Design

Second Exit / Entrance



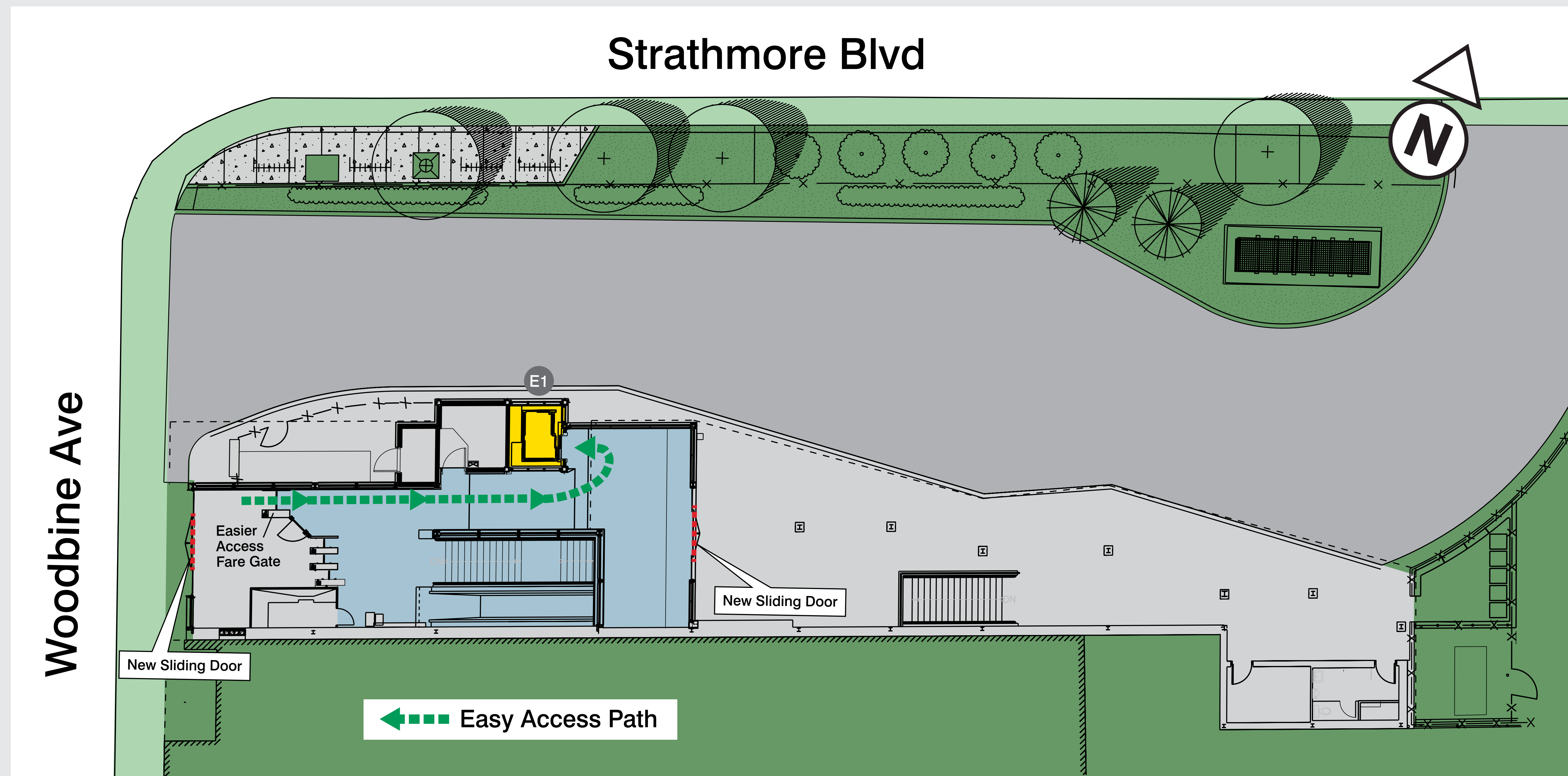
Main Entrance



* New automatic sliding doors, elevators, lighting, selective exterior finishes and upgrades



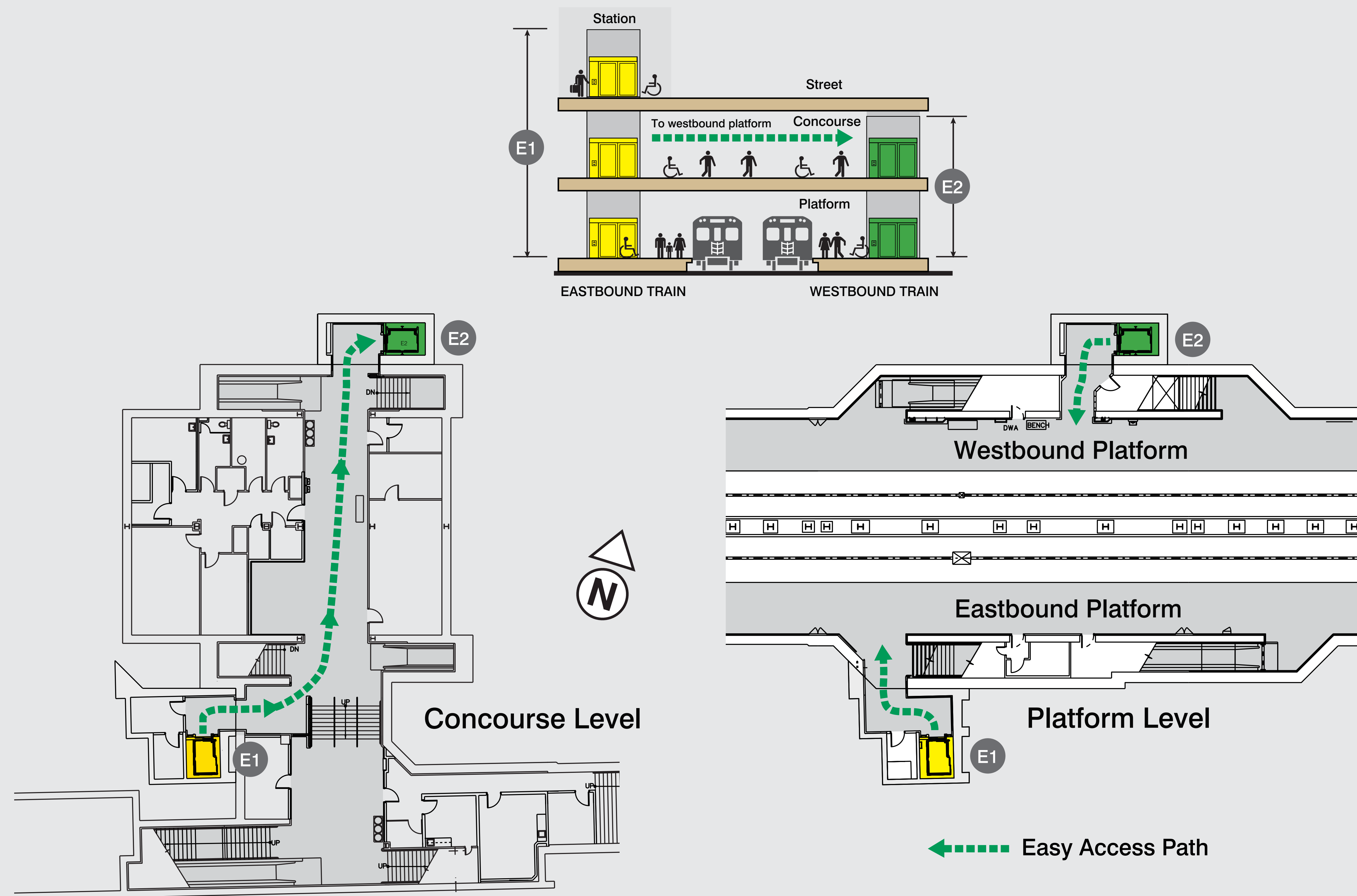
Design – Accessible Path



Street Level

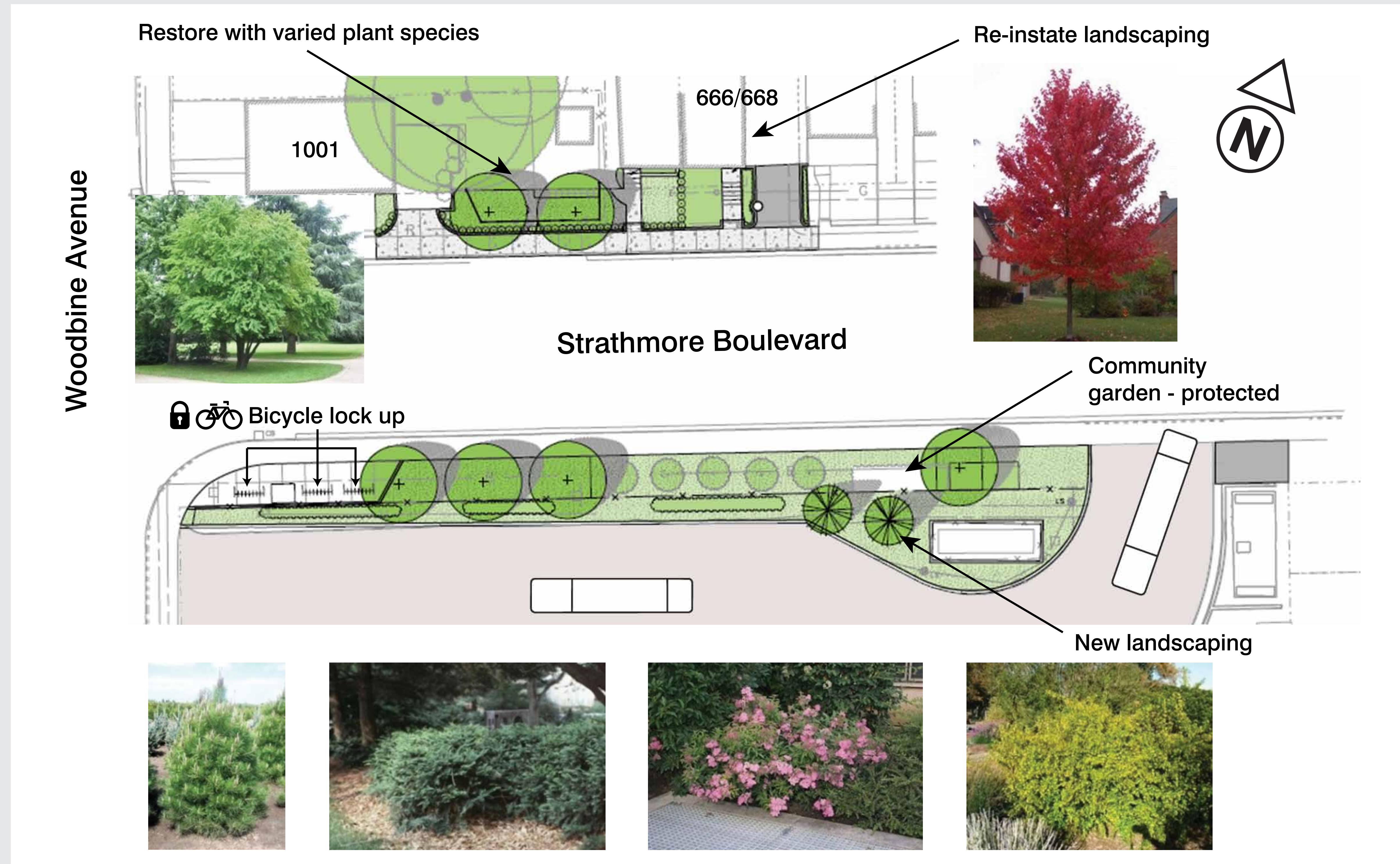


Design – Accessible Path





Landscaping at Bus Bay



- Enhanced landscaping

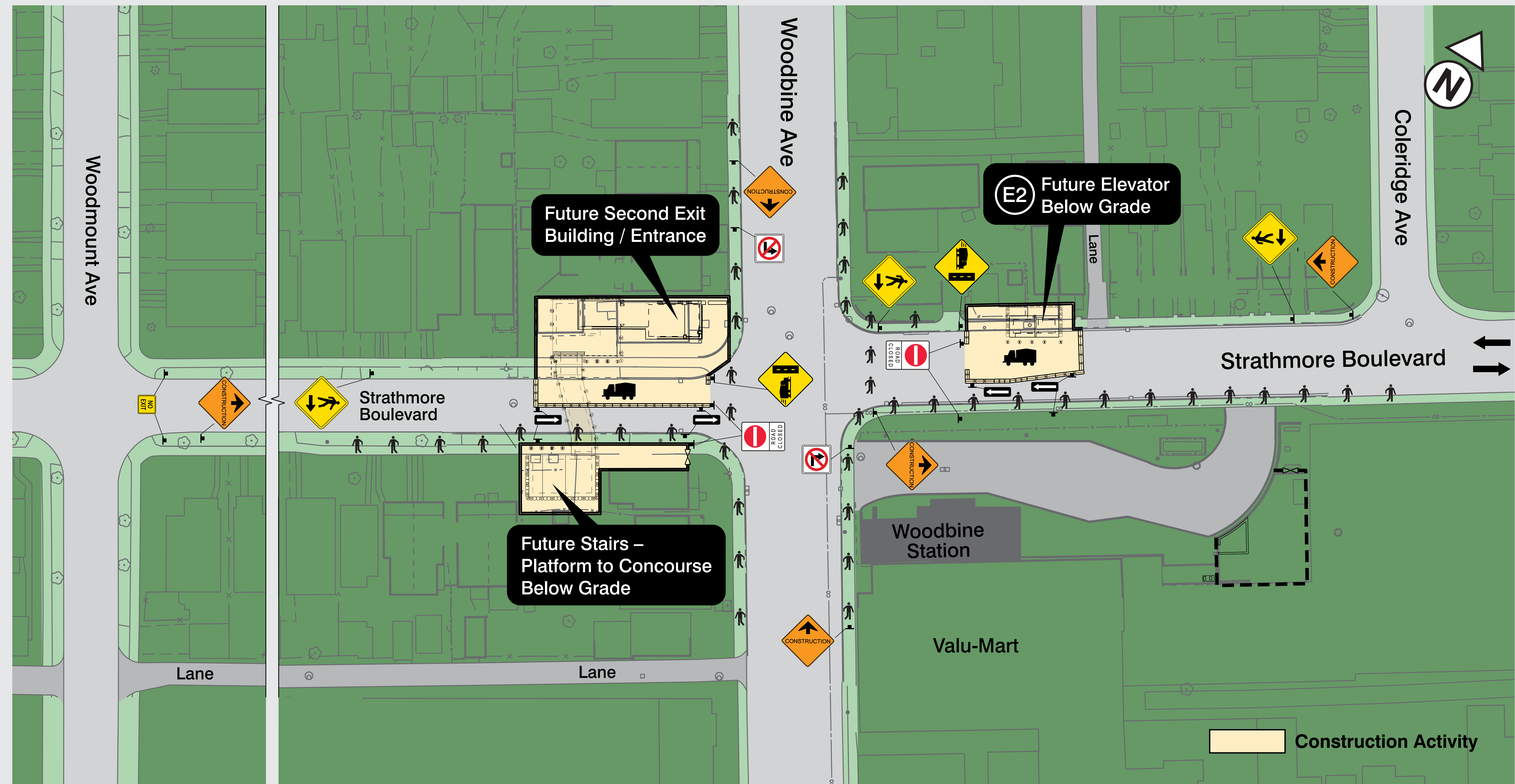


Landscaping at Second Exit / Entrance





Traffic Management – Current





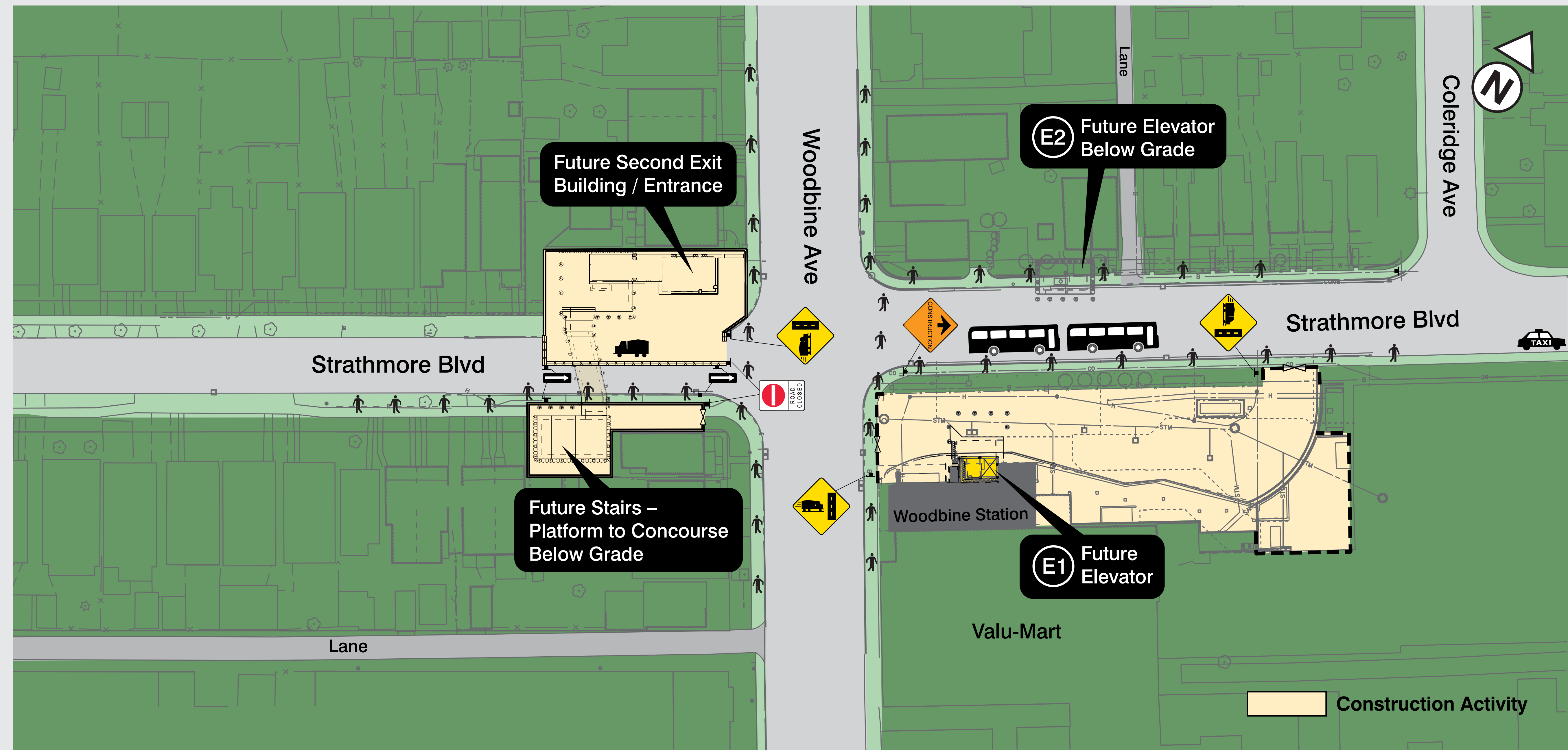
Construction – Current

Construction Activities

- **Elevator E2**
 - Excavation complete
 - Shaft construction
- **Second Exit**
 - Excavation complete
 - Stairs to east bound and west bound platforms under construction
- **Station Interior Work**
 - Gateway stand closed during construction
 - Sliding doors installed at main entrance
 - Expose ceiling for future installation of ceiling tile and lighting
 - Service rooms complete - non-public area



Traffic Management – 2015 - 2017*



*Bus roadway closed – 1 year



Construction 2014 - 2016 – Phase 1

Construction Activities

- Elevator E2
 - Excavation
 - Shaft Construction
- Second Exit
 - Demolish 998 Woodbine
 - Stairs to eastbound and westbound platforms
 - Stairs to street level
 - Underground corridor
 - Building construction
- Station Interior Work
 - Hoarding to protect public from work site
 - Relocate Gateway stand
 - New mechanical room
 - Replace turnstiles
 - Install sliding doors
 - New lighting
 - Replace concourse ceiling



Construction 2014 - 2016 – Phase 1

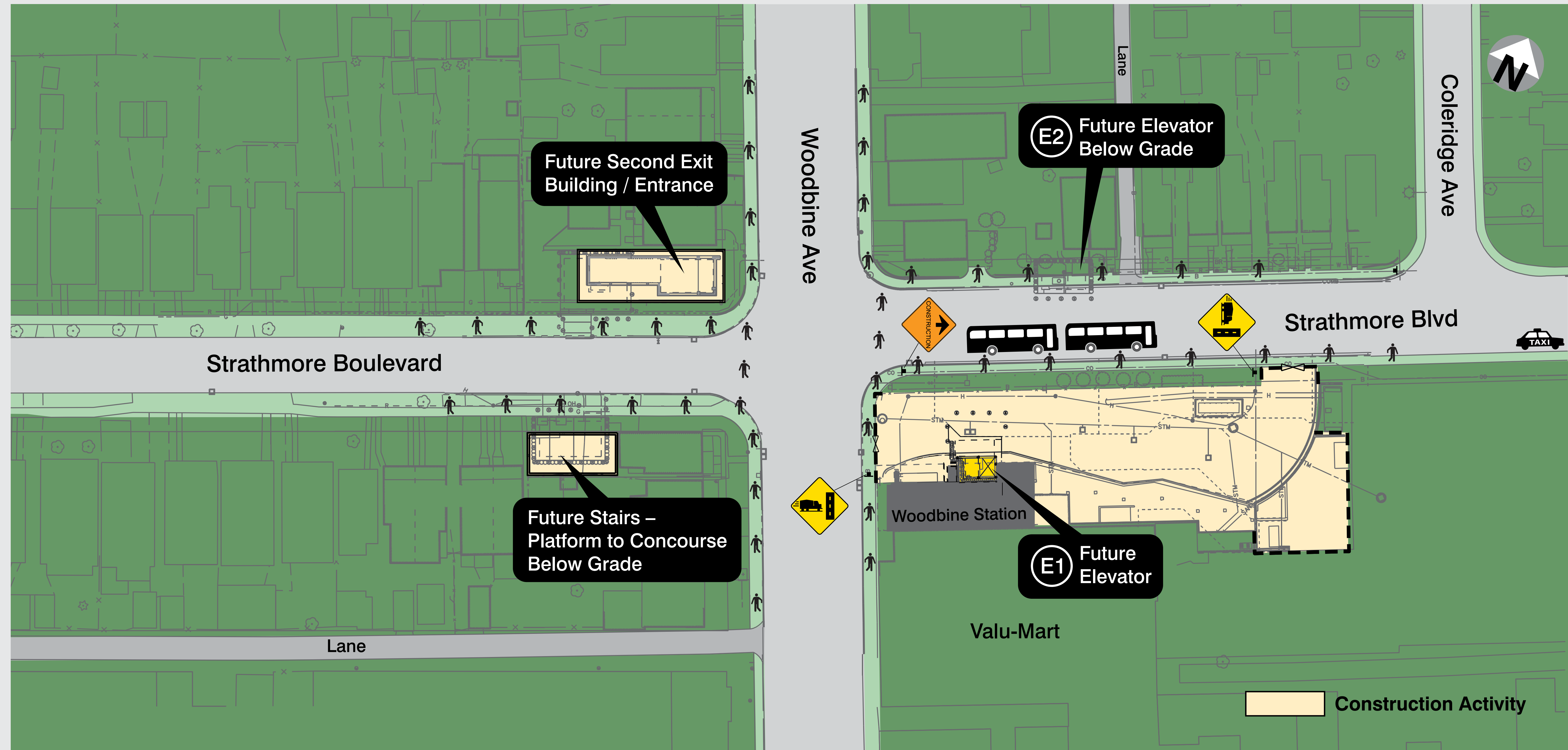
Impacts to Strathmore Blvd

- Westbound-only from Coleridge Ave. to limit of project
- 24/7 access to emergency vehicles
- Pedestrian access temporarily restricted to one side at times
- Some variation to traffic management as construction advances

Staging to be confirmed in conjunction with contractor

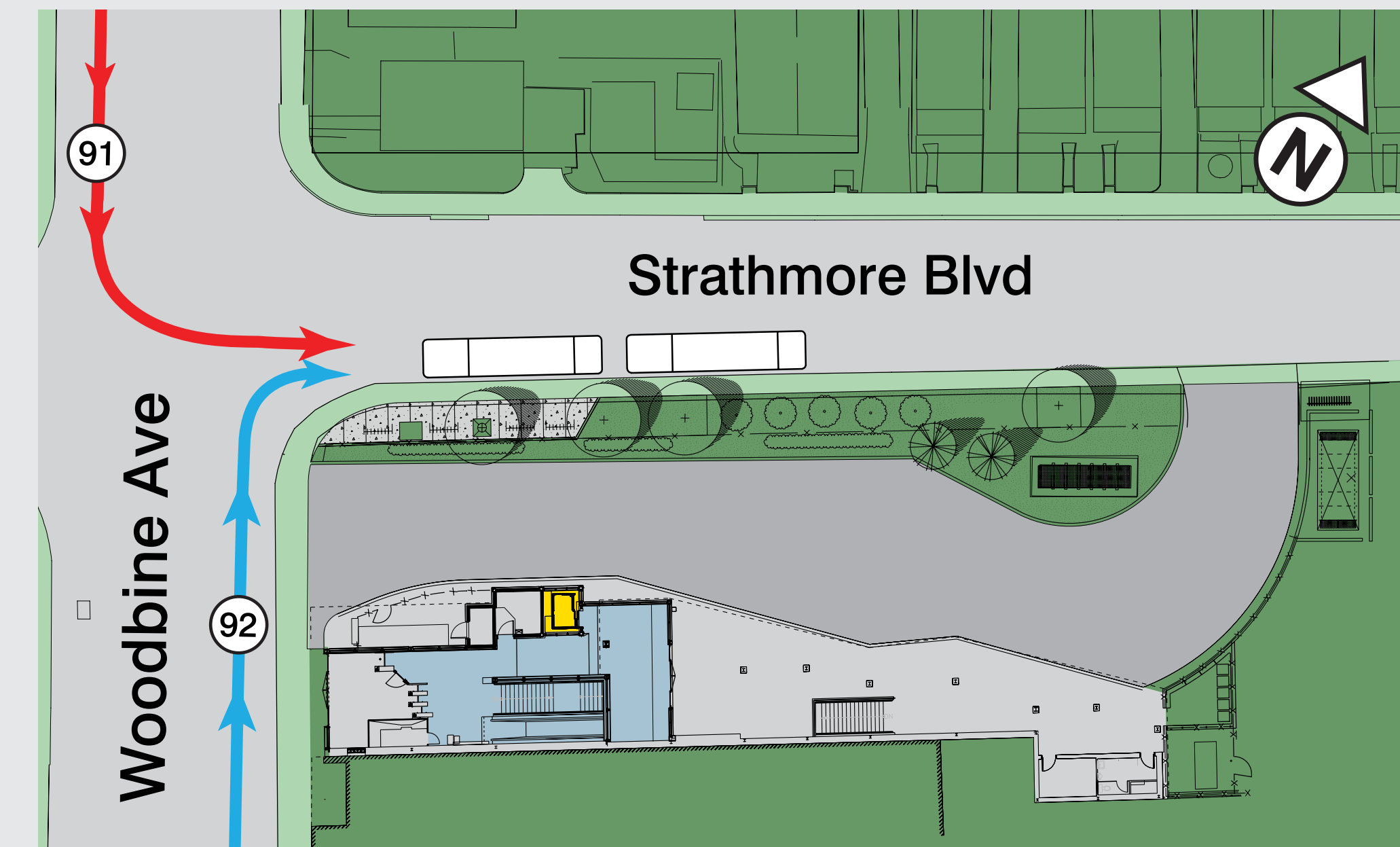
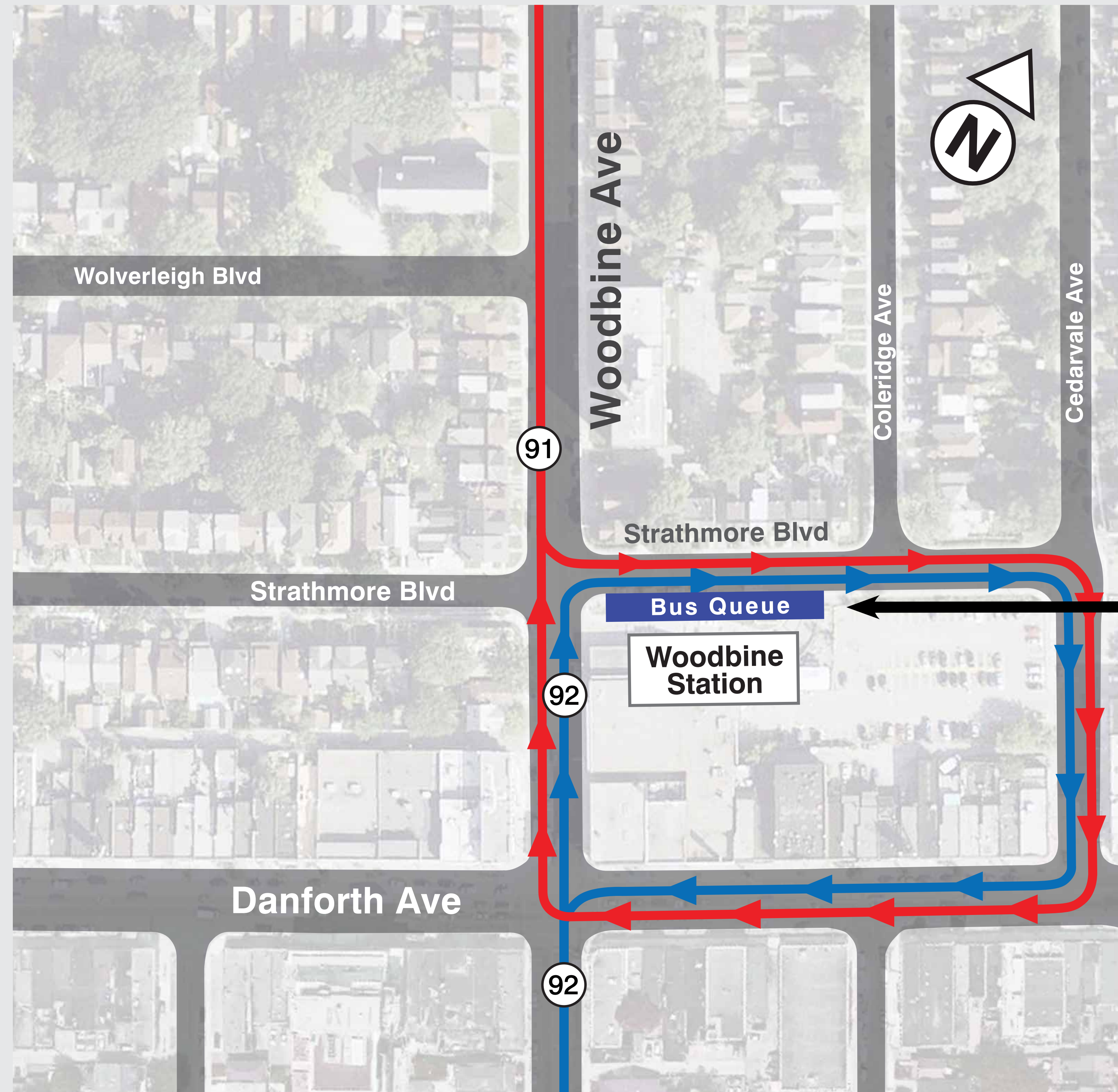


Construction Period 2015 - 2017 - Phase 2





Temporary Bus Re-routing



Buses to pick up and drop off on the south side of Strathmore Blvd during construction of E1 and re-paving of bus loop.

Start: September 6, 2015
End: Fall 2016



Construction Period 2015 - 2017

Late 2015 - 2016

- Restore two way traffic on Strathmore Blvd (West of Woodbine)
- Construct Elevator E1
- Bus loop re-paving – Bus platform closed
- Bus boarding moved to Strathmore Blvd

2016 - 2017

- Enhanced landscaping at bus bay
- Installation of Elevator E1
- Complete installation of Elevator E2
- Interior station finishes
 - Hoarding to protect public from work site
 - Stair tiles
 - Elevator lobby finish



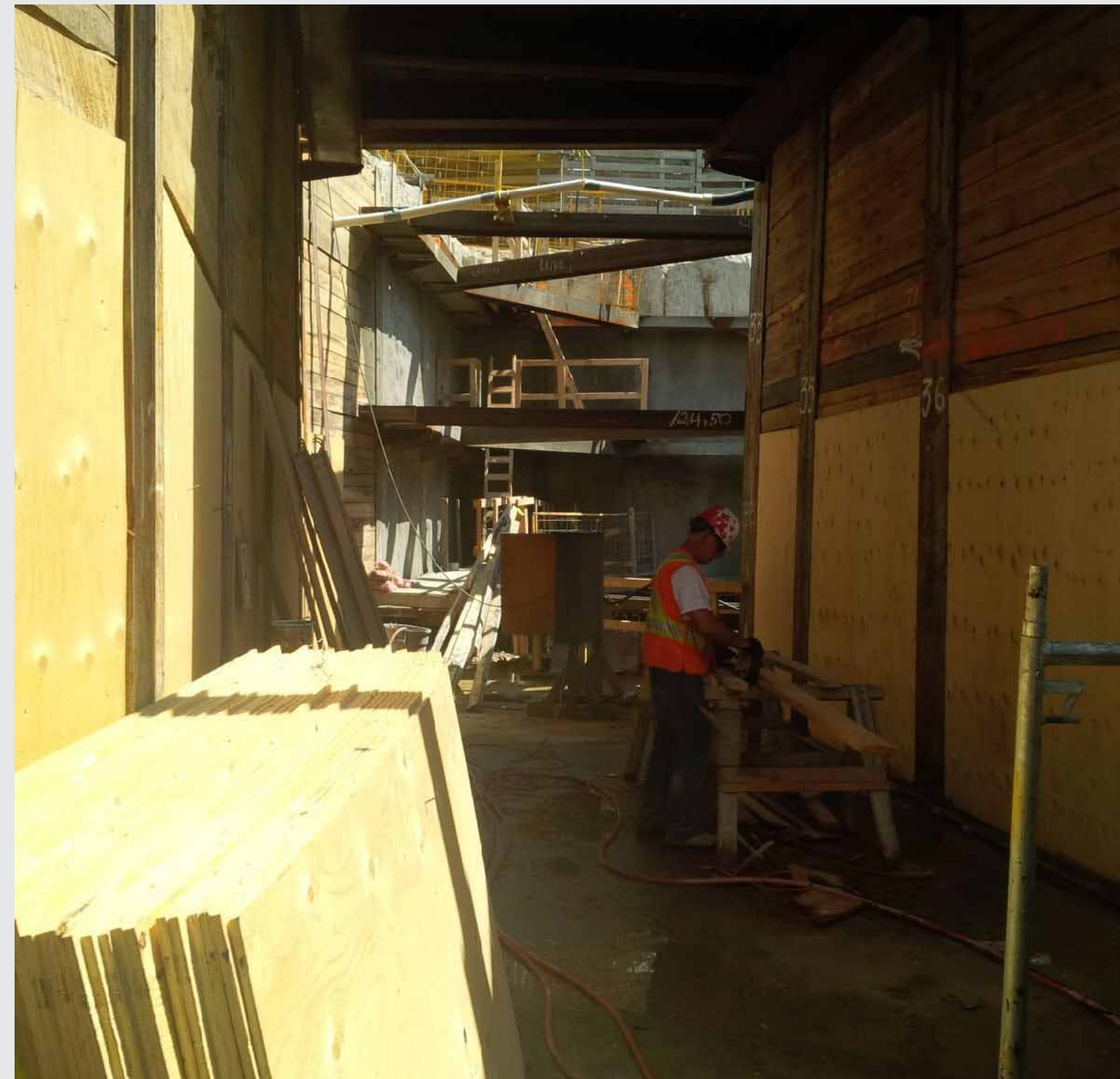
Construction Photos

Progress at the Second Exit Site

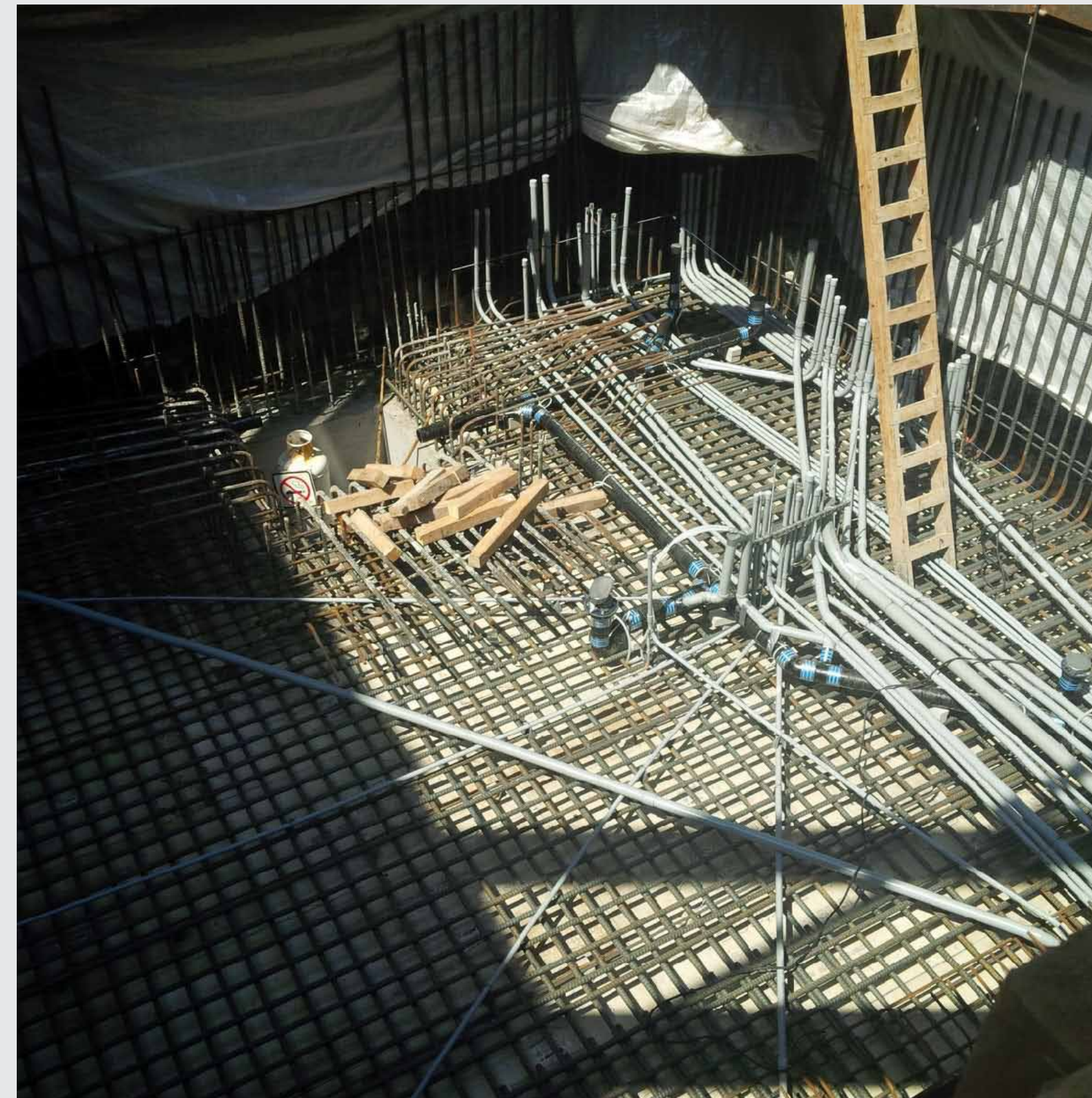




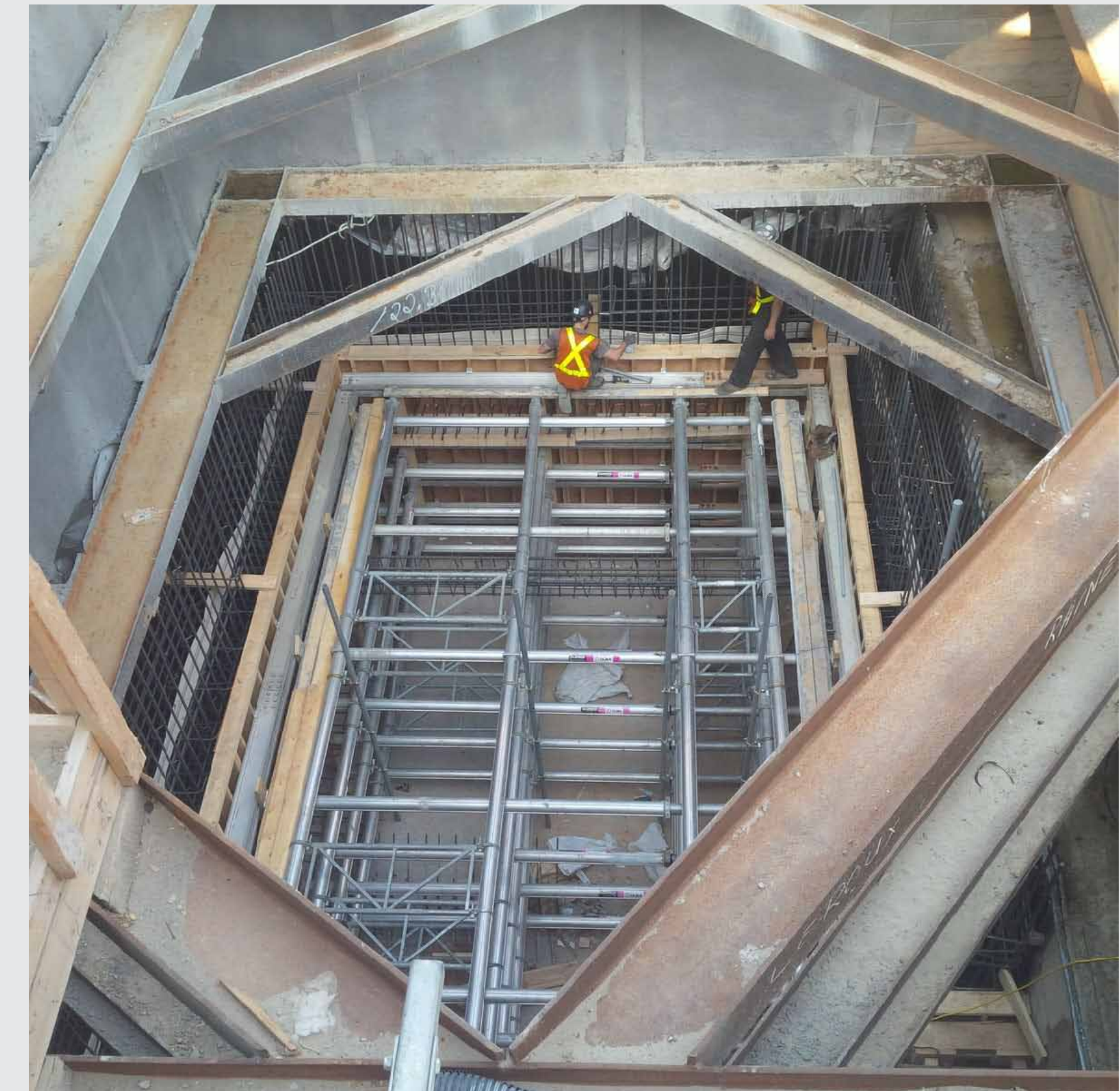
Construction Photos



Connector Path – Eastbound and Westbound Second Exit



Westbound Second Exit – platform level concrete base poured on June 6th, 2015



Eastbound Second Exit – platform level walls poured on May 29, 2015



Public Art

- Station upgrade work is subject to TTC Public Art Policy
- Art will be an important component of the station improvements
- Art jury including a local representative will review proposals
- One artist selected to produce artwork
- Concept presented to community at open house
- TTC Board approves concept
- Artist develops the artwork in co-ordination with the Easier Access Project



Public Art

- Concepts were reviewed by a five person jury
- Proposals did not meet one or more of the required criteria
- Public Art for this station will be presented at a future Open House

Woodbine Jury Spokesperson's Statement

Each of the proposals displayed unique strengths and overall impressive artistic talent. However, at the end of extensive discussion and deliberation, the jury assessed that each of the three submissions, as proposed, failed to fulfill one or more of the selection criteria.

A public art installation at Woodbine station will potentially inspire commuters, symbolize the character of the surrounding neighbourhood and represent the funders' dedication to excellence of service. It is the jury's belief that the TTC should not compromise on the choice of such a significant addition to the community. Thus, after much consideration and debate, it is the unanimous recommendation of the jury that the TTC pass on the options presented on June 10 and reopen the competition for a public art installation at Woodbine Station.

Cindy Rozeboom, Jury Member & Managing Director of East End Arts



Schedule*

- | | |
|------------------|---|
| July – September | <ul style="list-style-type: none">- continue construction of elevator shaft E2- construct stair shafts from eastbound and westbound platforms |
| Fall 2015 | <ul style="list-style-type: none">- close bus loop to start caisson work on Elevator E1- install caissons for Elevator E1- start excavation of Elevator E1 |
| 2016 – 2017 | <ul style="list-style-type: none">- continue excavation and construction of Elevator E1 shaft- install new sliding doors at bus platform- complete bus roadway repaving- continue construction of Second Exit Building- landscaping at bus bay and Second Exit Building |
| Summer 2017 | Completion Construction |

**Subject to change*



Woodbine Station Upgrades

Web: projects.ttc.ca

Email: lito.romano@ttc.ca

Phone: 416-397-8699

TTY: 416-397-0831

Fax: 416-485-9394

Mail: Lito Romano
TTC Community Liaison Officer
5160 Yonge Street, 13th Floor
Toronto, ON M2N 6L9

Thank you for your participation!



Freedom of Information and Protection of Privacy Act

Information collected will be used in accordance with the *Freedom of Information and Protection of Privacy Act*. With the exception of personal information, all comments will become part of the public record.