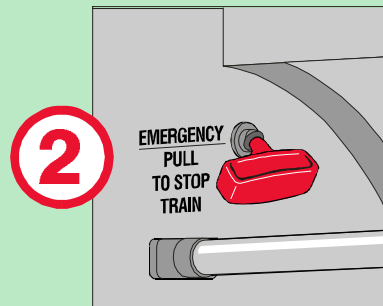


TTC PASSENGER SAFETY

Features on Trains

- ① PASSENGER ASSISTANCE ALARMS
For Fire, Harassment, Illness, Accident, Passenger Safety and Vandalism.
- ② EMERGENCY STOP DEVICE
Located at cab ends of the train cars (Do not use in tunnel).



Features on Platforms

DWAs are located on all Subway and SRT platforms, for passenger safety and convenience. Look for DWA signs and the high intensity lighting.



Features on Buses

REQUEST STOP PROGRAM
Allows women travelling alone on buses between 9:00 p.m. and 5:00 a.m. to ask the driver to let them get off the bus at locations between the regular TTC stops.

